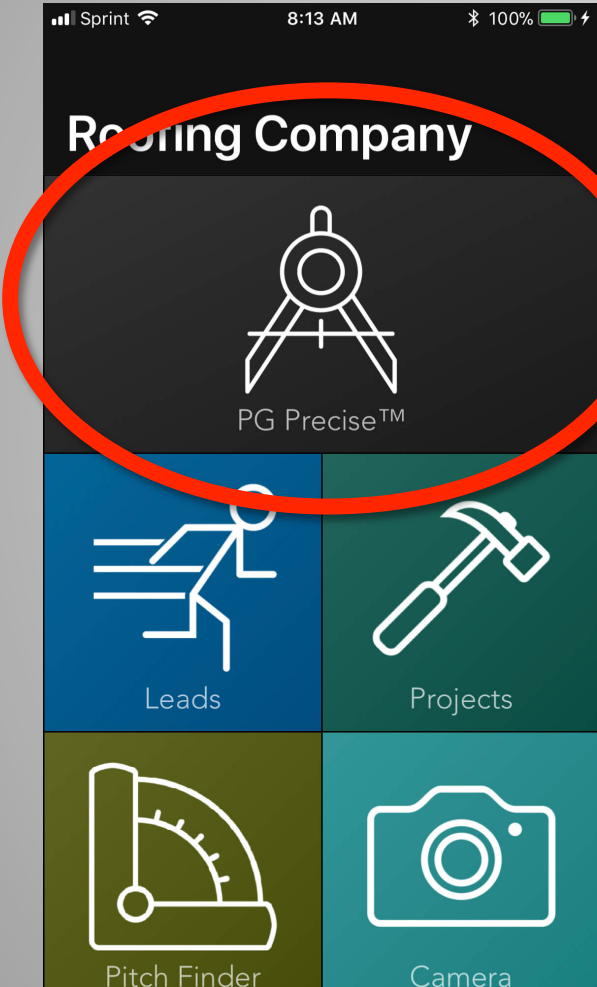




Getting Started With PG Precise™

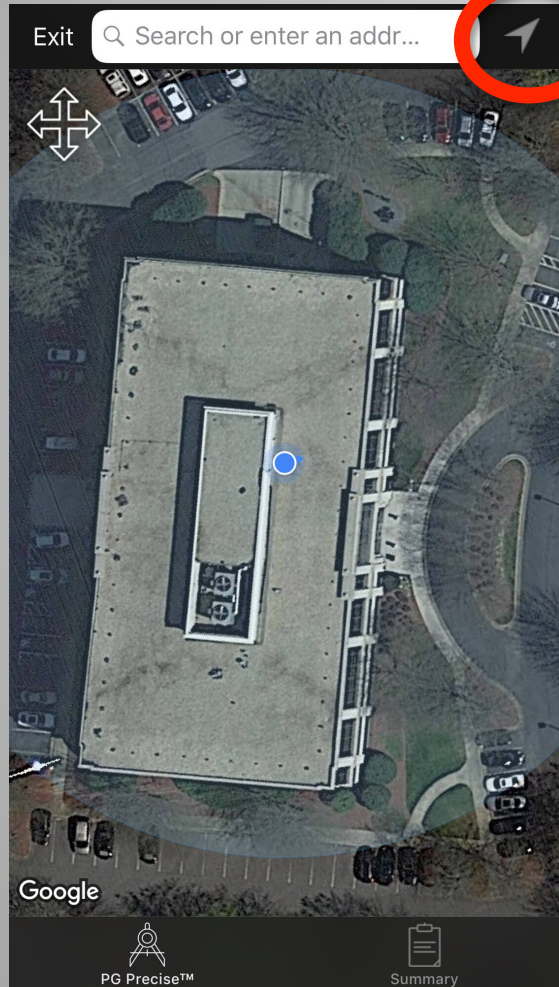
with Pitch Gauge®

Step 1



**Click on the
PG Precise™**

Step 2a

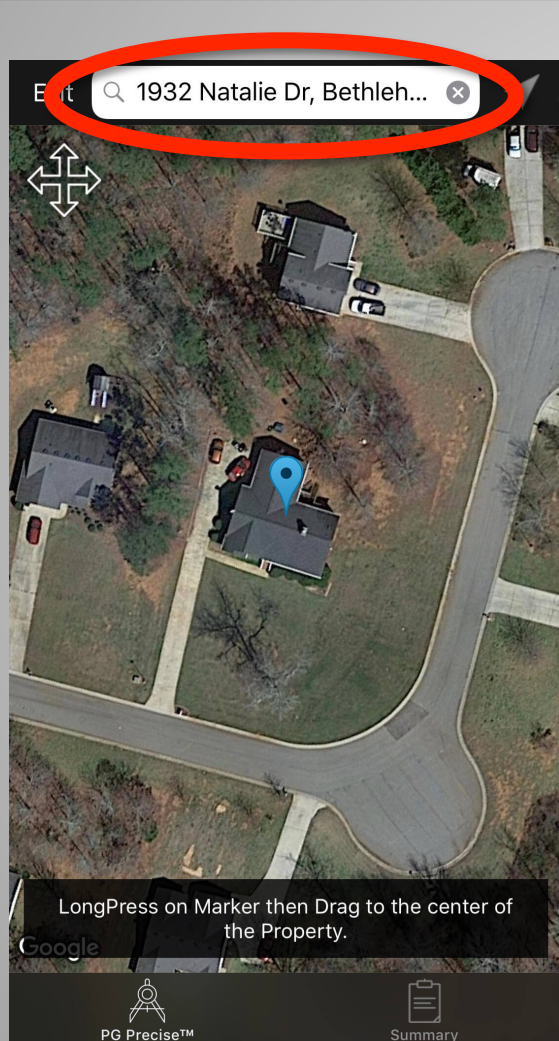


Option 1:

Click on the Location Button

Select this option if you are at the location of the Project you are trying to measure.

Step 2b

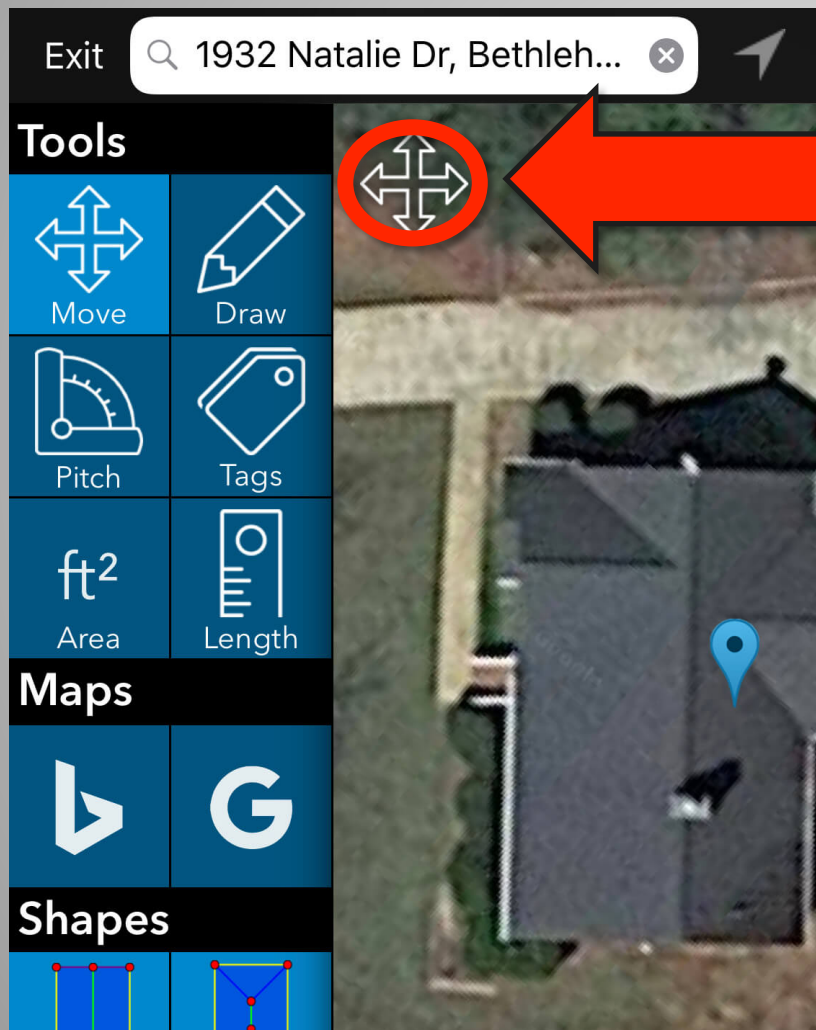


Option 2:

**Search for
Address**

Select this option if you want to look up the address of the Project you are trying to measure.

Step 3

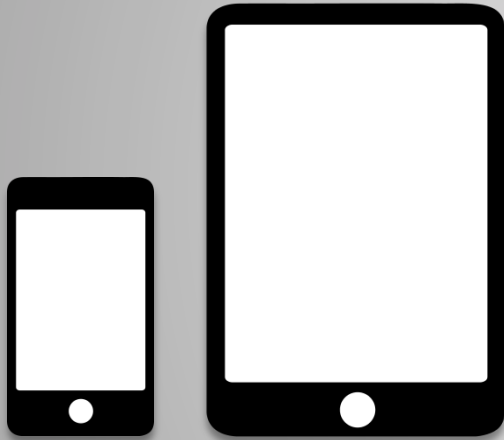


Click on the Move tool to open the side Panel.

Ready to Start Measuring

Proceed to the next Tutorial...

Access Pitch Gauge® from your
smartphone, tablet or computer



&

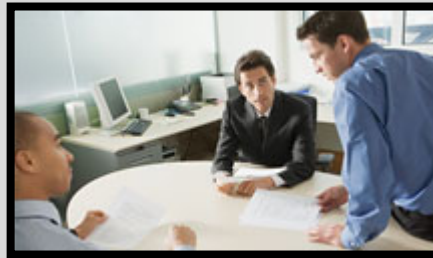


Add your entire team to your Pitch Gauge® account at no additional cost

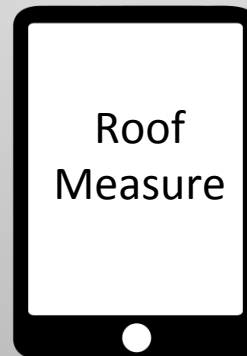
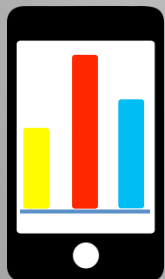
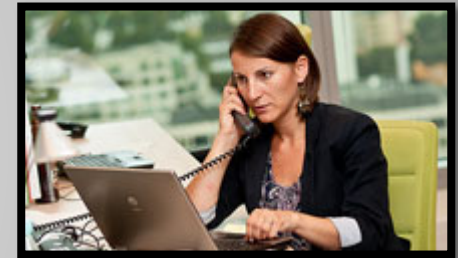
Boss



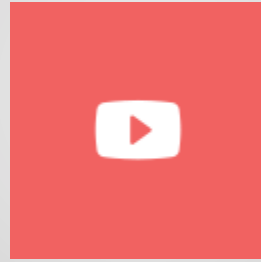
Sales



Secretary



Follow Us:



help@pitchgauge.com